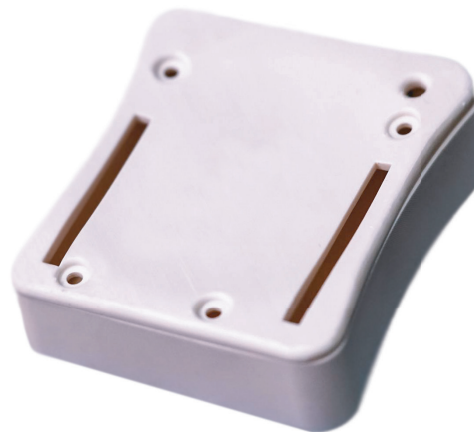




Daylight Precision Hard



## SPECS

### FEATURES

Daylight Precision Hard White resin has been created to produce highly strong, precise parts on the LC Precision Printer range along with a clean white colour. The printed parts will exhibit exceptional tensile strength and elongation comparable to that of acrylic and polyimide. The rigid parts produced show minimal shrinkage possible along with great accuracy. The resin is water and soap washable, so no need for IPA and will provide a dry surface finish after post exposure.

**Applications:** Engineering parts, Consumer Goods, Thermoforming models

### PROCESSING INSTRUCTIONS

Follow the procedures laid out in your 3D Liquid Crystal user manual. For best post-processing results, clean using a Photocentric Wash 15L with Photocentric Resin Cleaner for maximum 15 minutes. Rinse thoroughly with warm to hot water. Place in Cure M or L2 for 20-40 minutes in water at 60-80°C. followed by UV light at 80 °C for minimum of 1 hour to obtain the maximum tensile properties.

### DATA

<b>Viscosity</b> (At 25°C Brookfield spindle 3)	980 cPs
<b>Hardness</b> ASTM D2240 (After post exposure)	94 Shore D
<b>Tensile strength</b> ASTM D638 (After post exposure, 1h UV)	80 MPa
<b>Elongation at break</b> ASTM D638 (After post exposure, 1h UV)	5.6%
<b>Storage</b>	10<t>50°C
<b>Density</b>	1.09 g/cm <sup>3</sup>

### AVAILABLE COLOURS

#### White

Available in 1kg bottles.