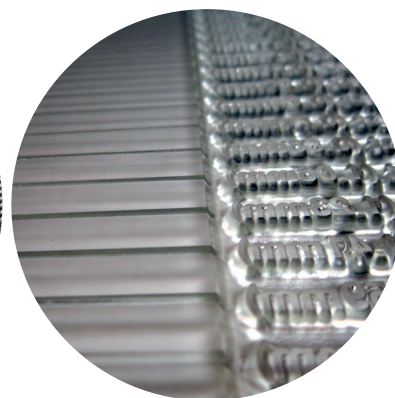
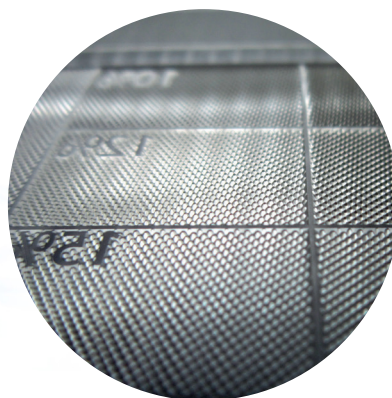




i90 Photopolymer



## SPECS

### FEATURES

Photocentric i90 photopolymer is an ultra hard moulding polymer delivering 90 on the A scale and 50 on the D scale. It is rigid, inflexible and very, very hard

### PLATE SPECIFICATIONS

**Plate thickness range** 0.045 - 0.125"

**Floor thickness** 0.020 - 0.050"

**Relief thickness** 0.025 - 0.065"

**Fine line min** 0.006" (0.152mm)

**Isolated dot min** 0.010" (0.254mm)

**Tone range Line** 1-95%

**Screen max** 120dpi

### POLYMER SPECIFICATIONS

**Hardness 90 Shore A.** 50 shore D (range 40 to 55)

**Viscosity** 26,000 cps (range 23,000 to 28,000)

**Colour** Clear

**Storage** 10<t>50C

### PROCESSING INSTRUCTIONS

Lay negative, apply vacuum to coverfilm, discharge resin with backing sheet, expose i90 with standard back and main exposure times for your machine, wash, rinse, dry thoroughly, post expose under water rinse and dry.

### PACKING SPECIFICATIONS

1kg, 2kg, 5kg, 10kg, 18kg, 200kg and 1000kg

### INK COMPATIBILITY

Water, oil and glycol based.

### STORAGE CONDITIONS

Stored properly your plates will last for years and deliver over a million impressions. Plates should be cleaned thoroughly after each press run and stored flat, away from light in a cool, dry place with a relative humidity of approximately 60%.