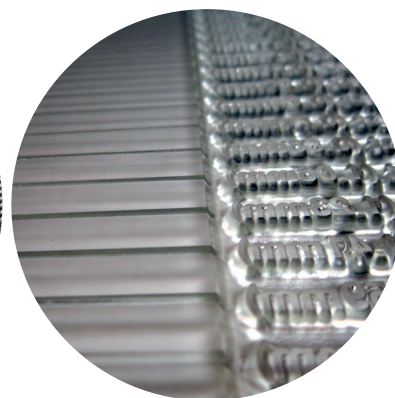
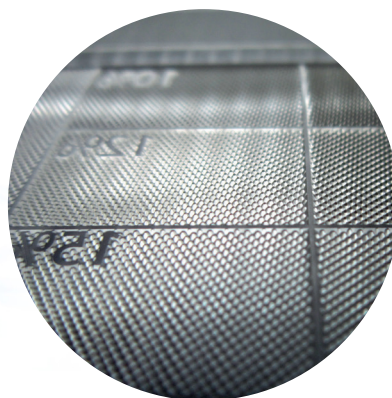




i55 Photopolymer



SPECS

FEATURES

Photocentric i55 clear photopolymer is an excellent high definition grade for business stamp making. It will deliver excellent print quality with minimal dot gain for demanding print requirements. i55 is a special formulation to provide faster exposure times, deliver harder crisper images and give the user more control with higher viscosity and more controlled pouring by hand. You will experience the benefits of a wide exposure latitude, allowing you to hold open reverses while maintaining fine relief. i55 also has superior UV resistance, delivering durable high quality impressions for years to come.

PLATE SPECIFICATIONS

Plate thickness range 1.9- 3.2mm

Floor thickness 0.9 - 1.5mm

Relief thickness 1.0 - 1.7mm

Fine line min 0.006" (0.152mm)

Isolated dot min 0.010" (0.254mm)

Tone range 1-95%

Line screen max 120dpi

POLYMER SPECIFICATIONS

Hardness 55 Shore A (range 53 to 57)

Viscosity 25,000 cps (range 23,000 to 27,000)

Colours Clear, Red, Green.

Storage 10<t>50C

PROCESSING INSTRUCTIONS

Lay negative, apply vacuum to coverfilm, pour resin without air bubbles, ensure bearers of correct thickness surround imagepac, lay backing sheet coated side down, expose i55 with slightly shorter times than you would use normally (about 10% less for standard back and main exposure times) for your machine, wash, rinse, dry thoroughly, post expose under water, rinse and dry.

PACKING SPECIFICATIONS

1kg, 2kg, 5kg, 10kg, 18kg, 200kg and 1000kg

INK COMPATIBILITY

Water, oil and glycol based.

STORAGE CONDITIONS

If the finished plate is not subjected to UV (only applicable to hand stamps) it will last for years and deliver over a million