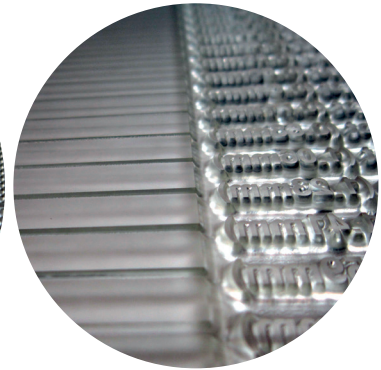




i50 Photopolymer



SPECS

FEATURES

Photocentric i50 clear capping photopolymer is specific grade designed for capping onto soft, 18 durometer base polymer. It will deliver the highest quality of liquid plate possible with minimal dot gain under compression. It enables the perfect combination of ideal hardness for surface ink transfer on top of the softest base delivering maximum compression to cope with variable fluting of poor quality board. It will be reclaimed into the soft reclaim tank. It provides you with a tack free surface, excellent solids coverage and high plate resilience. It provides the same viscosity and exposure latitude as the softer grades. It has superior UV resistance, delivering durable print quality for years to come.

PLATE SPECIFICATIONS

Capping thickness 0.005 - 0.030"

Fine line min 0.002" (0.05mm)

Isolated dot min 0.003" (0.10mm)

Tone range 1-95%

Line screen max 150dpi

POLYMER SPECIFICATIONS

Hardness 50 Shore A (range 48 to 53)

Viscosity 32,000 cps (range 30,000 to 37,000)

Colours Clear, Red, Green.

Storage 10<t>50C

PROCESSING INSTRUCTIONS

Lay negative, apply vacuum to coverfilm, discharge capping resin at about 10 thou thickness then lay soft resin on top, ideally 18 duro, expose with standard back and main exposure times for your machine, rinse, dry thoroughly, post expose under water and finish with dry germicidal light to deliver a perfect tack free surface.

PACKING SPECIFICATIONS

18kg and 200kg

INK COMPATIBILITY

Water, oil and glycol based.

STORAGE CONDITIONS

Stored properly your plates will last for years and deliver over a million impressions. Plates should be cleaned thoroughly after each press run and stored flat, away from light in a cool, dry place with a relative humidity of