

STUDIO

Minimum Computer Requirements

- Operating System Windows 7, 8 or 10
- Minimum 2.0 Ghz processor speed 2 cores. Recommended 4 cores
- GPU capable of opening opengl version 3.0 or higher
- .net framework version 4.0
- 64bit system: minimum 2GB of RAM, recommended 4GB
- 32bit system: minimum 1GB of RAM, recommended 2GB

You can run the software using macOS by using a Virtual Workstation with Windows installed on it.

Photocentric

UK
Cambridge House, Oxney Road
Peterborough PE1 5YW UK.
info@photocentric.co.uk
www.photocentricgroup.com

USA
2205 West Parkside Lane, Phoenix,
85027, AZ USA

USER MANUAL

Software Installation

1

If Windows Defender prevents the installation from starting simply click **More Info** then **Run Anyway** to begin the installation process.

Windows protected your PC

Windows Defender SmartScreen prevented an unrecognized app from starting. Running this app might put your PC at risk.

More info

Don't run

2

The set up wizard will then load on your screen. To proceed with the installation simply click **Next**.

Photocentric Studio

Welcome to the Photocentric Studio Setup Wizard

The installer will guide you through the steps required to install Photocentric Studio on your computer.

WARNING: This computer program is protected by copyright law and international treaties. Unauthorized duplication or distribution of this program, or any portion of it, may result in severe civil or criminal penalties, and will be prosecuted to the maximum extent possible under the law.

Cancel < Back Next >

3

Now select the location for your installation to be saved to. If you wish to change the location simply click **Browse** and select a new location of your choice. Once the location has been selected click **Next**.

Photocentric Studio

Select Installation Folder

The installer will install Photocentric Studio to the following folder.
To install in this folder, click "Next". To install to a different folder, enter it below or click "Browse".

Folder:
C:\Program Files (x86)\Photocentric\Photocentric Studio\

Browse...
Disk Cost...

Install Photocentric Studio for yourself, or for anyone who uses this computer:
☒ Everyone
☐ Just me

Cancel < Back Next >

4

Once you have selected the location of the installation click **Next** to begin the installation of the software.

Photocentric Studio

Confirm Installation

The installer is ready to install Photocentric Studio on your computer.
Click "Next" to start the installation.

Cancel < Back Next >

5

Installation has now completed, click **Close** and you can now open the software. When opening the software you will see a section to enter your license number, click on this section and enter your license number provided into the field as shown.

Photocentric Studio

Installation Complete

Photocentric Studio has been successfully installed.
Click "Close" to exit.

Please use Windows Update to check for any critical updates to the .NET Framework.

Cancel < Back Close

NOTE

The software comes with a 30 day trial. If you wish to use the trial before activating your license simply click 'Continue Evaluation'.

Photocentric Studio

14 of 14 days remaining.

Thank you for evaluating Photocentric Studio.

To continue your evaluation of Photocentric Studio, click the 'Continue Evaluation...' button below.
Continue Evaluation

If you have a license for Photocentric Studio, click the 'Enter License...' button below to enter it and unlock the software.
Enter License...

To purchase Photocentric Studio, click the 'Purchase...' button below.
Purchase...

To exit Photocentric Studio, click the 'Exit Program' button below.
Exit Program

Photocentric Studio

14 of 14 days remaining.

Enter license text for Photocentric Studio below:

Paste From Clipboard Load From File...

Apply License

<< Back

Getting Started

1

Select the printer and the resin profile, then press **Apply**.

Choose machine & print profile

Machine

Photocentric LC Precision

Material and print profile

Castable Smoky Quartz 25 microns

Photocentric LC Precision printing volume:
120.96 x 68.04 x 160.00 mm

Apply

2

To configure general settings, machine and print settings, press **File** and then select **Configuration**. You can change support settings in the dropdown **Support Profiles**.

Photocentric Studio

File View Move Slice

New... Ctrl+N

Open file... Ctrl+O

Import file...

Export selected...

Save Ctrl+S

Save As..

Configuration

Reset configuration

Options

General

Slice Mask Wizard

Machines

Photocentric LC 10

Photocentric LC HR

Photocentric LC Pro

Photocentric LC Precision

Support profiles

Single support

Lattice

Tree support

Internal

Internal tree

Base plate

Split lattice (support general)

Print profiles

Graphics

Single support

0.6 mm

1.0 mm

1.2 mm

3.0 mm

3.6 mm

1.0 mm

Cancel

Save

3

Press the selected button to open your file.

File View Move Slice Help

0 5 10

4

Use the highlighted buttons to change views, copy, move and for scaling.

File View Move Slice Help

0 5 10

Support

For support you need to activate support mode by going to Help on the top menu, Help documentation, Supporting.

Photocentric Studio

File View Move Slice Help

Photocentric LC Precision

Castable Smoky Quartz 25 microns

Volume 0.26 ml (0% support)

Layers 1515 (accurate)

Print time ~ 09:00

Part name

(1) R.stl

Support mode

Support mode

Object properties

Support generation (basic)

Support generation (advanced)

Mesh problems

Number of degenerate faces 0

Number of naked edges 0

Mesh properties

Number of faces 413592

Number of vertices 296220

Object properties

Name R.stl

Surface in mm2 1651.08521

Volume in mm3 257.4932

Object size

X Size (mm) 21.6098

Y Size (mm) 15.026

Z Size (mm) 25.6951961

Load default

Save as default

Apply to selection

5

Some stl models have a very shiny surface which is difficult to see when adding supports. To solve this issue you can change the view to **Filled Frame**.

File View Move Slice Help

0 5 10

Shaded

Wireframe

Filled frame

NOTE

To help further you can also change the colour of the object surface in configuration mode.

5.1

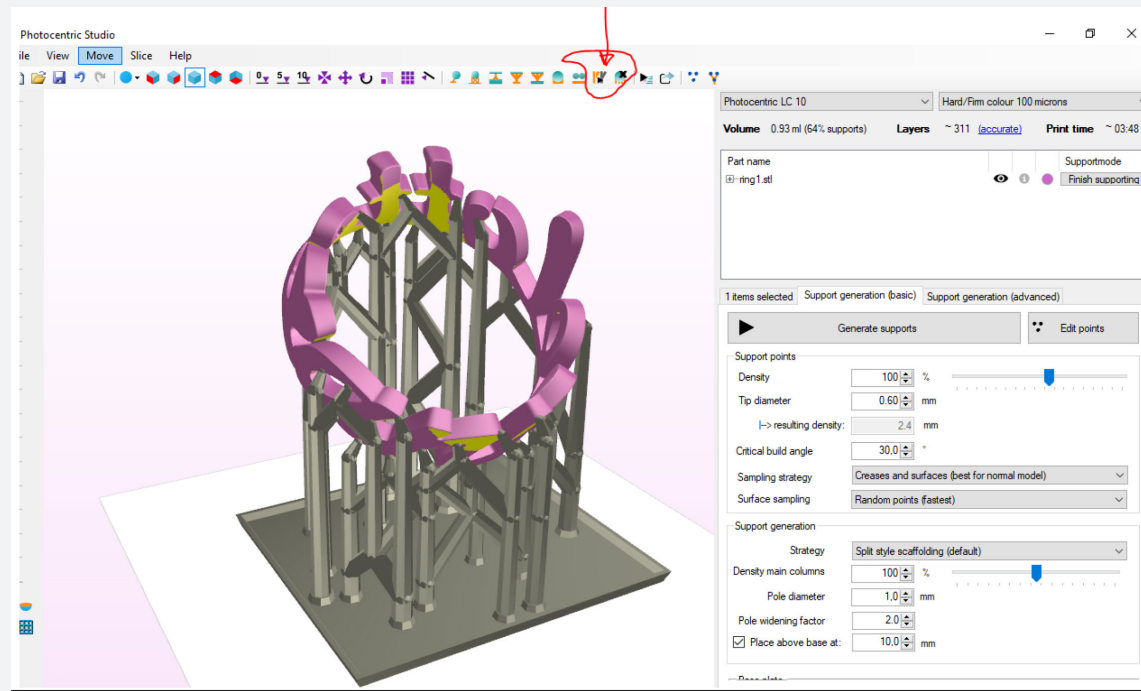
For designing different variations of manual supports, adding and deleting supports use the 8 buttons shown.

There is also the option to choose different variations of supports in the automatic menu.

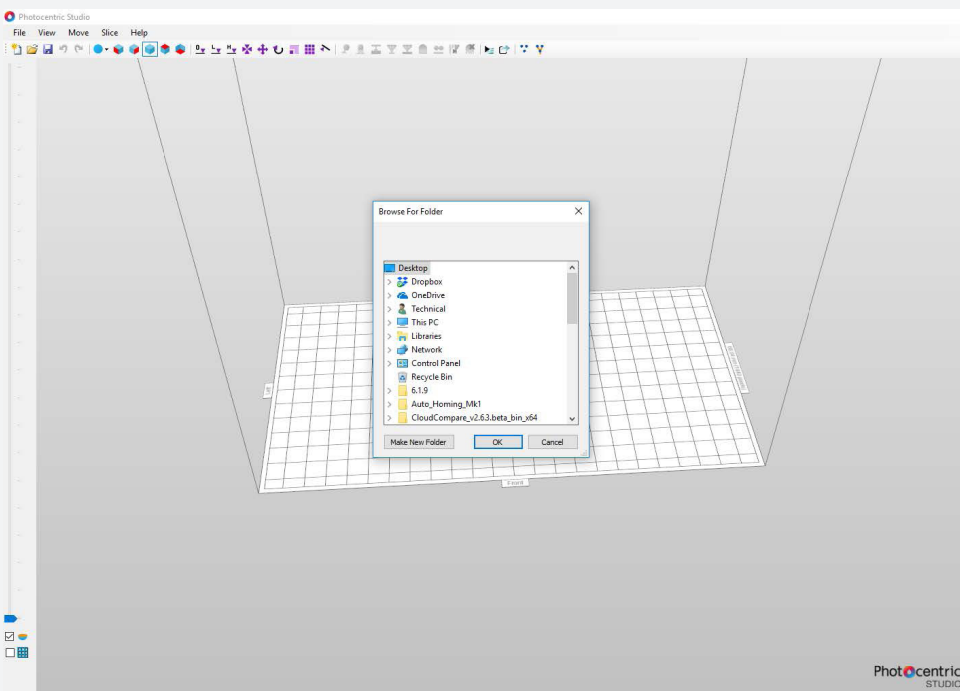
The red circled buttons will show you the skeleton of supports or point of support contact to the 3D model, here you can modify the joints and positions.

8 buttons

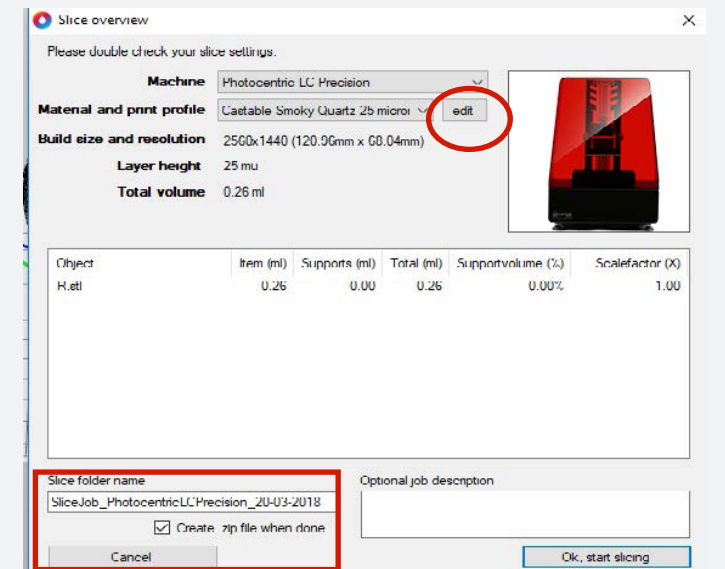
- 6** The two circled buttons allow you to flatten supports. This solves the problem of lattice supports becoming slow, this can happen when very detailed supports are used. Typically this would be used once you have finished with an object, allowing you to easily handle 20 objects.



- 7** To slice file, use the red circled button shown, then choose the location to save file and press **OK**.

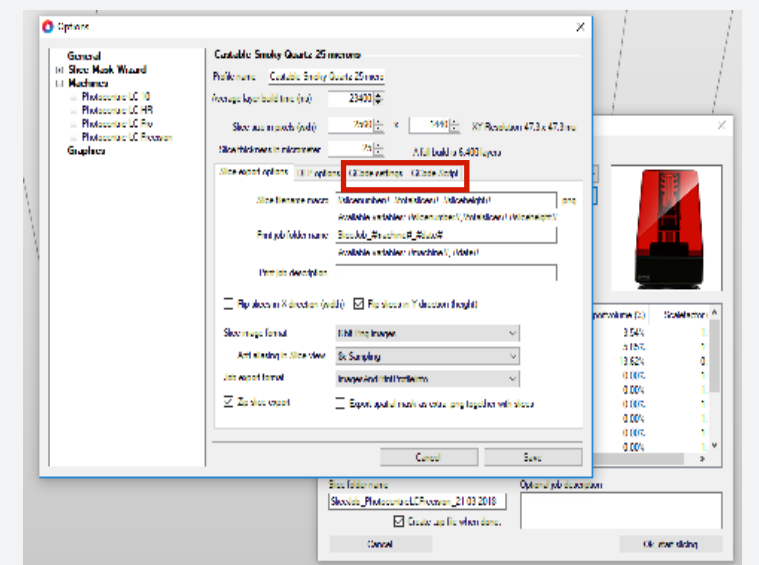


- 8** Before slicing you can check your machine and print settings in **Edit**. In **Edit** you can also change your file name under **Slice folder name**. After your settings have been checked you can then begin slicing by pressing **OK, start slicing**.



Print settings in **Edit** mode give you access to the advanced print settings option. We do not recommend changing anything in the first two tabs. In the tab **GCode Settings** you have access to the print time and motor parameters which can be modified.

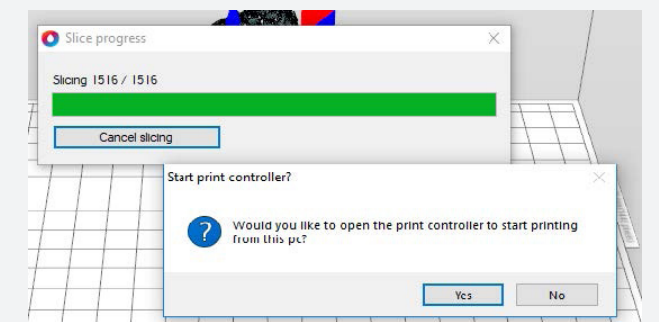
In the tab **GCode Script** you have access to the GCode script modification.



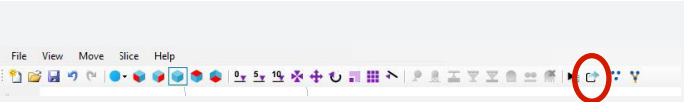
- 9** Once slicing has finished press **Yes** to open the printer controller.

NOTE

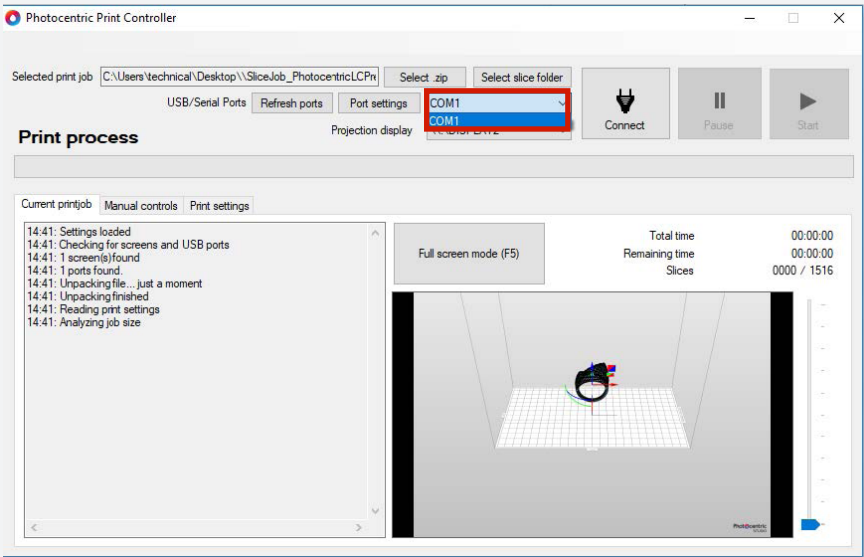
For LCHR you do not need to use printer controller. You can transfer the sliced file to a USB stick and then start your print with LCHR. For all other printers you will need to use printer controller.



10 Open printer controller via red circled button.



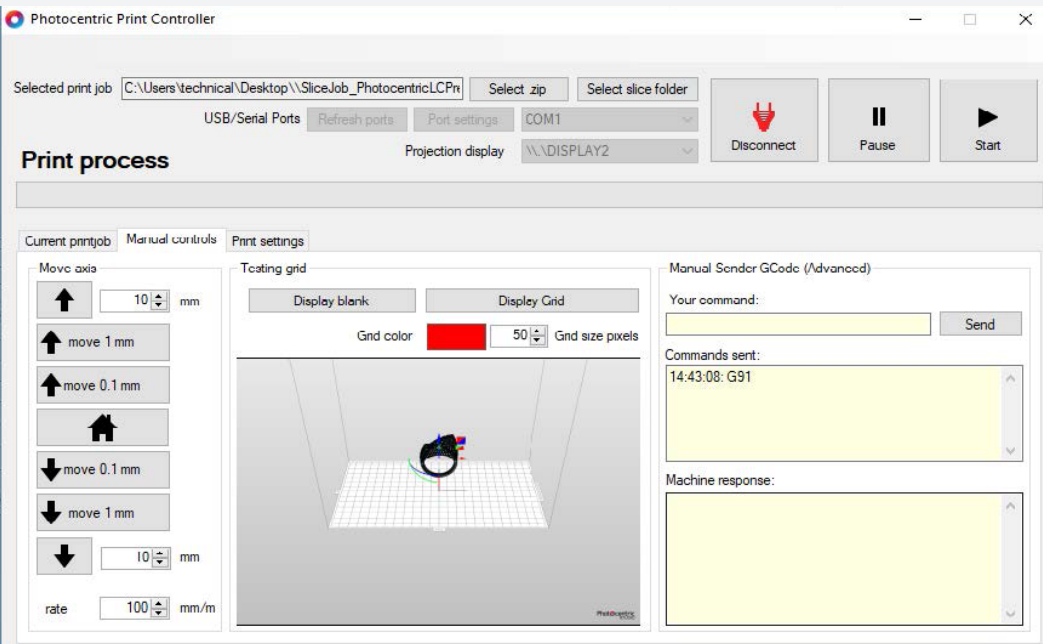
11 To connect your printer via print controller select COM port and display then use **Connect** button.



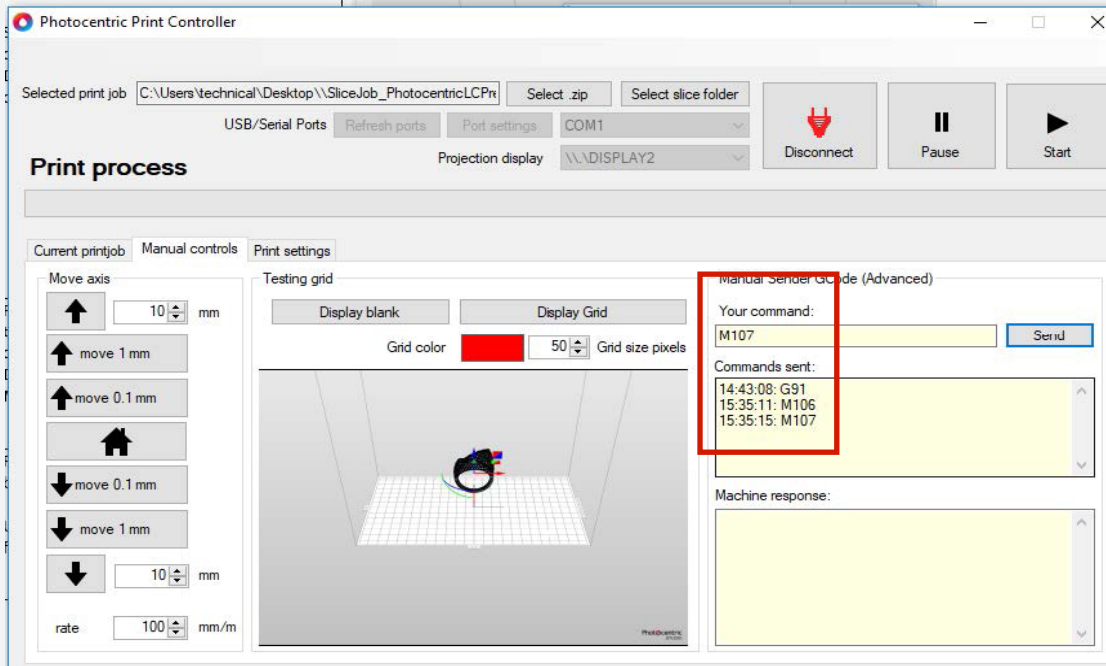
12 After successful connection select **Manual Controls** to check the screen and stepper motor are functioning and connection correctly.

Select **Display Grid** to check your printer display, your display should show a grid.

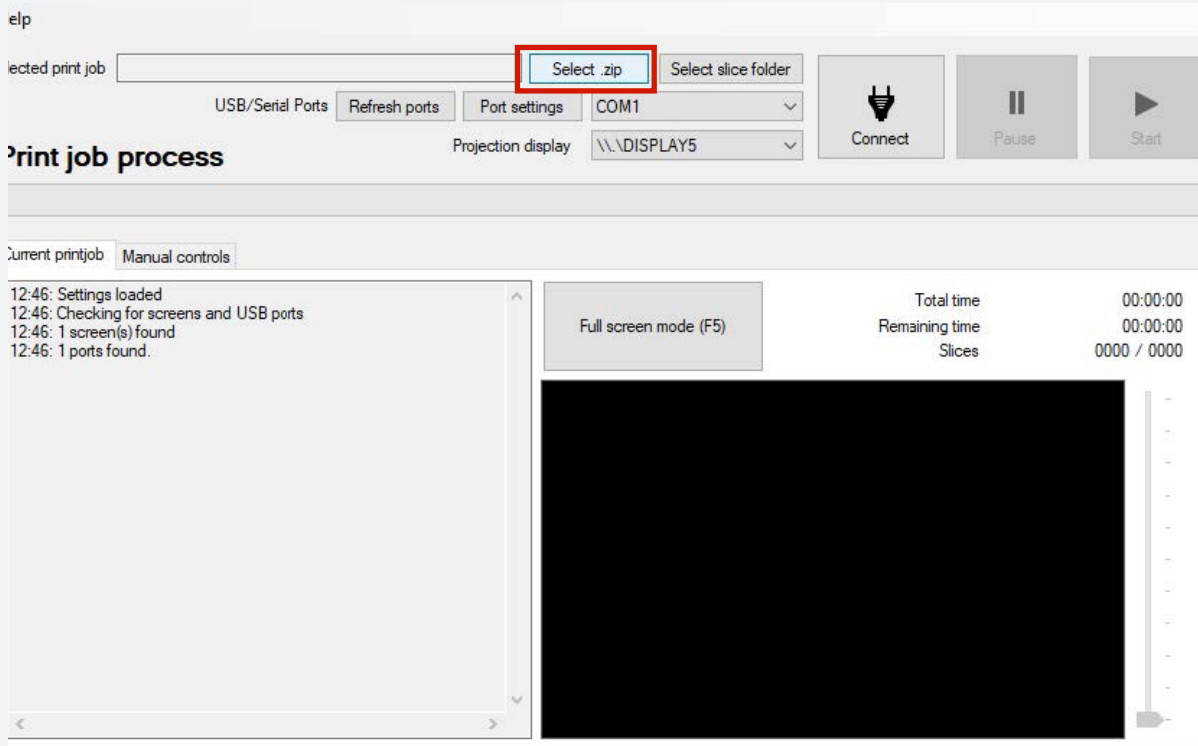
To show blank screen and turn off grid select **Display Blank**.



13 For LC Precision you will need to write in the red circled section command M106 to check your screen and back-light, then press **Display Grid**. Use command M107 to turn off. For the LC Pro simply press the display grid.

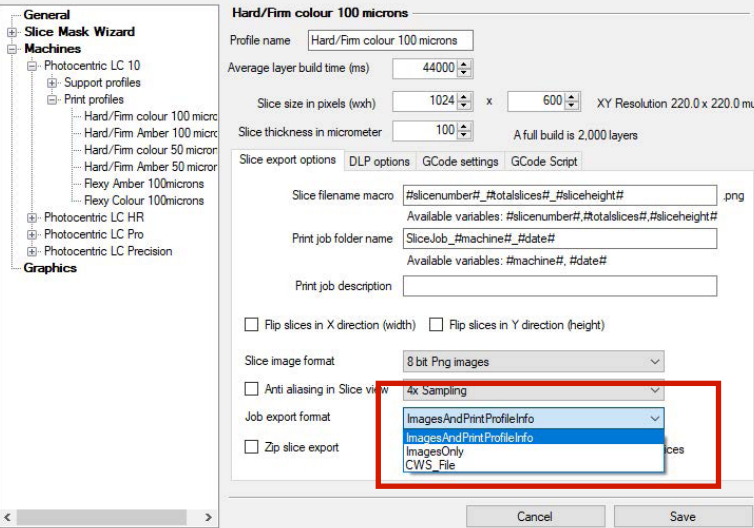


14 For uploading the file please use the **Select Zip** button. Uploaded file format can be zip, cws or folder with sliced images and g-code.



15 Use the red circled option for choosing desired file format.

NOTE
Printers which do not need a direct connection with computer will recognise cws. and zip. file format.
For printers which are connected directly and need to be used with print controller please use zip file format.

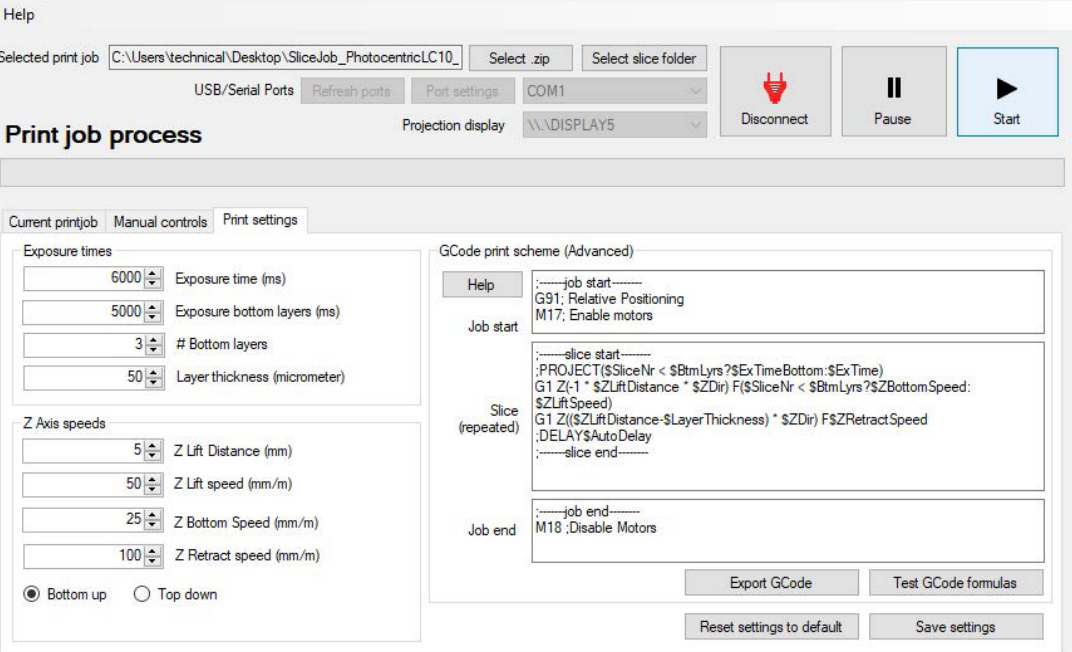


16 If you would like to save your file but still have the option to modify, for example supports, go to **File** then **Save as type**: and choose **p3d** format.

If you save your file in the **.stl** format you will not have the option to modify all of the objects.



17 To begin the print process press the **Start** button. The software will inform you when the print process has finished.



18 When you see the Blue update alert, please download the latest version of software from the Photocentric Studio webpage. Before doing so remember to uninstall your current software, and then install the new one. If you want to keep your configuration/settings, before uninstalling the software go to the tab file “export configuration xml”. If you want to just save the machine profiles please go to the tab configuration machine and export the desired machine profile with the resin and support profiles.

